

TECHNICAL SPECIFICATIONS

LINK 2



TECHNICAL DATA

LINK 2			21	23	25	27
CELLS	NUMBER		55	55	55	55
ASPECT RATIO	FLAT		5,1	5,1	5,1	5,1
AREA	FLAT	m ²	21	23	25,5	27,5
	PROJECTED	m ²	18,27	20,01	22,19	23,93
CORD	MAXIMUM	m	2,52	2,63	2,77	2,88
LINES	TOTAL	m	254	267	282	294
	MAIN				2+1/4/3/2	
RISERS	NUMBER				A+A'/B/C/D	
	TRIMS	mm	170	170	170	170
	ACCELERATOR	mm	85	85	85	85
SPEED RANGE		km/h			TRIM = 38-47 MAX. 55	
TOTAL WEIGHT IN FLY	MIN-MAX	kg	55-100	70-120	90-145	105-170
GLIDER WEIGHT		kg	4,8	5,1	5,5	6,0
CERTIFICATION					DGAC / EN-962-1	

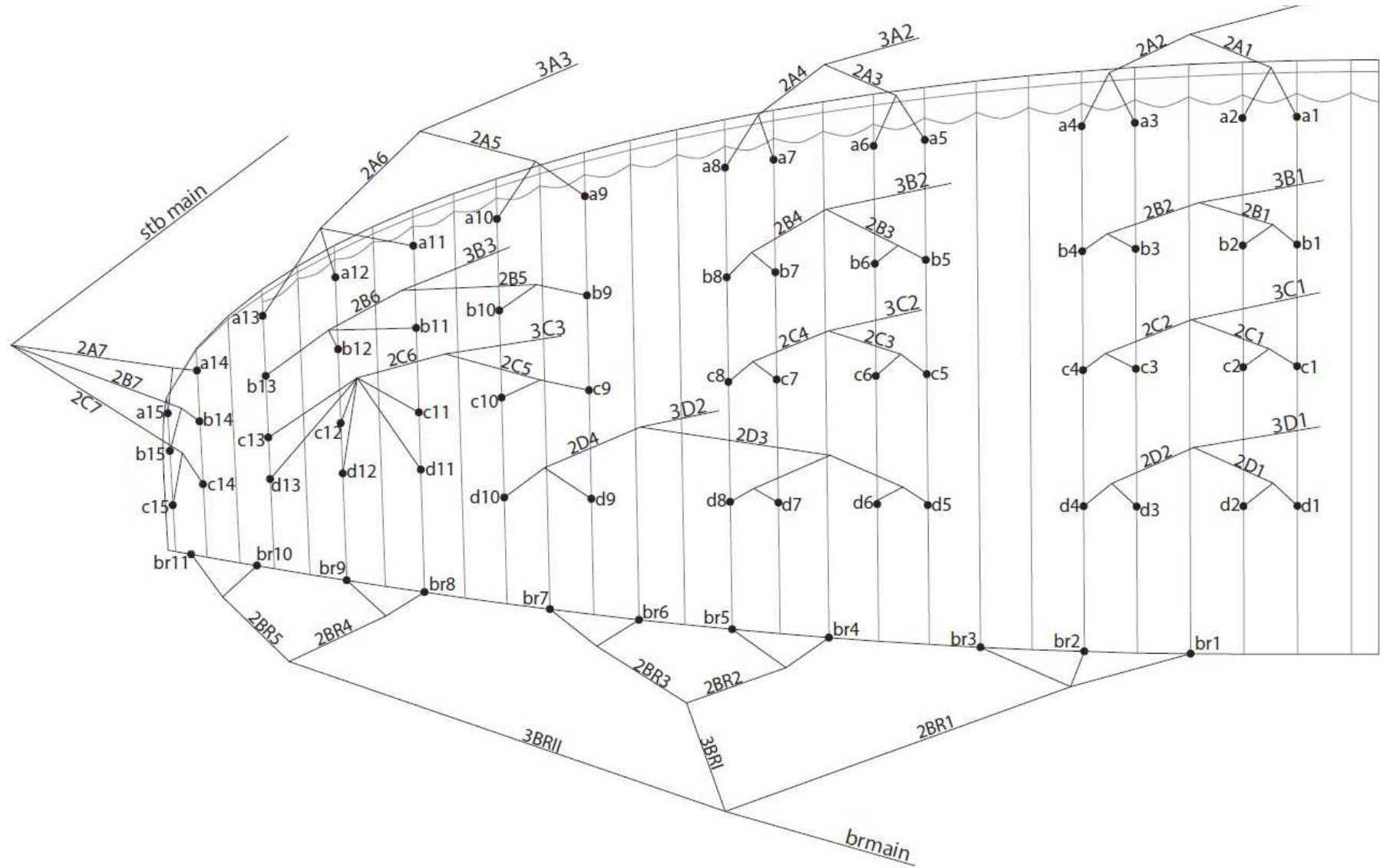
MATERIALS TECHNICAL DATA

CANOPY	FABRIC CODE	SUPPLIER
UPPER SURFACE	N20 DMF	DOMINICO TEX CO (KOREA)
BOTTOM SURFACE	N20 DMF	DOMINICO TEX CO (KOREA)
PROFILES	9017 E29	PORCHER IND (FRANCE)
DIAGONALS	9017 E29	PORCHER IND (FRANCE)
LOOPS	LKI - 10	KOLON IND. (KOREA)
REINFORCEMENT LOOPS	W-420	D-P (GERMANY)
TRAILING EDGE REINFORCEMENT	MYLAR	D-P (GERMANY)
RIBS REINFORCEMENT	LTN-0.8 STICK	SPORTWARE CO.CHINA
THREAD	SERAFIL 60	AMAN (GERMANY)

SUSPENSION LINES	FABRIC CODE	SUPPLIER
UPPER CASCADES	TNL - 80	TEIJIM LIMITED (JAPAN)
MIDDLE CASCADES	TNL - 80	TEIJIM LIMITED (JAPAN)
MIDDLE CASCADES	TNL - 140	TEIJIM LIMITED (JAPAN)
MAIN	TNL - 140	TEIJIM LIMITED (JAPAN)
MAIN	TNL - 220	TEIJIM LIMITED (JAPAN)
MAIN	TNL - 280	TEIJIM LIMITED (JAPAN)
MAIN BREAK	TNL - 280	TEIJIM LIMITED (JAPAN)
THREAD	SERAFIL 60	AMAN (GERMANY)

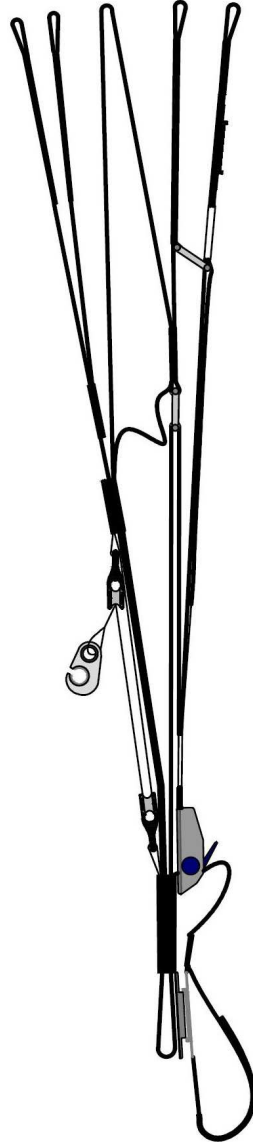
RISERS	FABRIC CODE	SUPPLIER
MATERIAL	WD103	COUSIN (FRANCE)
COLOR INDICATOR	PAD	TECNI SANGLES (FRANCE)
THREAD	V138	COATS (ENGLAND)
MAILLONS	MRI4	ANSUNG PRECISION (KOREA)

SUSPENSION PLAN



A	A'	B	C	D
3A1	3A3	3B1	3C1	3D1
3A2		3B2	3C2	4D1
		3B3	3C3	

stbmain

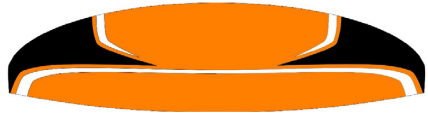


COLORS TECHNICAL DATA

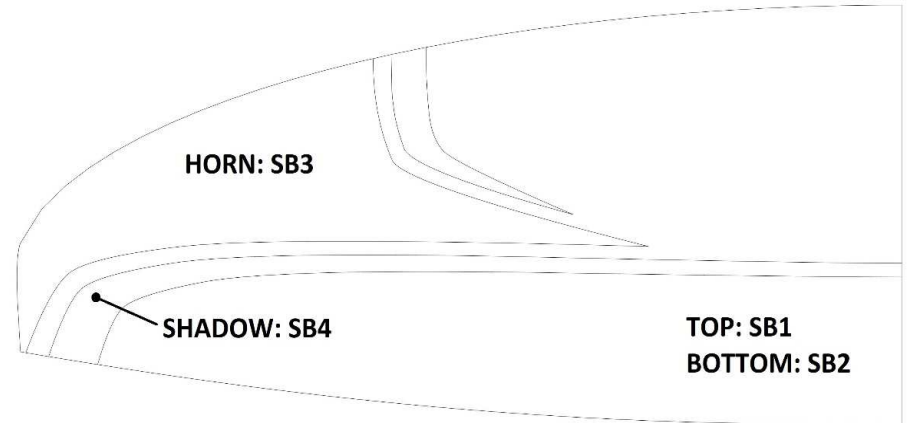
JAZZ	SB1	ROYAL BLUE	TOP	REF:317
	SB2	ROYAL BLUE	BOTTOM	REF:317
	SB3	BLACK	HORN	REF: 102
	SB4	WHITE	SHADOW	REF: 001



HARDOS	SB1	ORANGE	MAIN TOP	REF: 744
	SB2	ORANGE	MAIN BOTTOM	REF: 744
	SB3	ROYAL BLUE	HORN	REF: 317
	SB4	BLACK	PRINCIPAL SHADOW	REF: 102



CHERIMOYA	SB1	LIMA	TOP	REF: 500
	SB2	LIMA	BOTTOM	REF: 500
	SB3	BLACK	HORN	REF: 102
	SB4	WHITE	SHADOW	REF: 001



WING LOAD TECHNICAL DATA

LINK 2

21		23		25		27	
P.T.V.	kg/m2	P.T.V.	kg/m2	P.T.V.	kg/m2	P.T.V.	kg/m2
P.T.V.	KG/M2	P.T.V.	KG/M2	P.T.V.	KG/M2	P.T.V.	KG/M2
55	= 2,62	70	= 3,04	90	= 3,53	105	= 3,82
60	= 2,86	75	= 3,26	95	= 3,73	110	= 4,00
65	= 3,10	80	= 3,48	100	= 3,92	115	= 4,18
70	= 3,33	85	= 3,70	105	= 4,12	120	= 4,36
75	= 3,57	90	= 3,91	110	= 4,31	125	= 4,55
80	= 3,81	95	= 4,13	115	= 4,51	130	= 4,73
85	= 4,05	100	= 4,35	120	= 4,71	135	= 4,91
90	= 4,29	105	= 4,57	125	= 4,90	140	= 5,09
95	= 4,52	110	= 4,78	130	= 5,10	145	= 5,27
100	= 4,76	115	= 5,00	135	= 5,29	150	= 5,45
		120	= 5,22	140	= 5,49	155	= 5,64
				145	= 5,69	160	= 5,82
						165	= 6,00
						170	= 6,18

LINES TECHNICAL DATA

LINK 2					21																																					
REF.	MAT.	kg	COLOR	mm	REF.	MAT.	kg	COLOR	mm	REF.	MAT.	kg	COLOR	mm	REF.	MAT.	kg	COLOR	mm	REF.	MAT.	kg	COLOR	mm																		
A					B					C					D					BRAKE																						
A1	TNL	140	GREEN	309	B1	TNL	140	BLUE	307	C1	TNL	80	BLUE	310	D1	TNL	80	BLUE	313	BR1	TNL	80	RED	1477																		
A2	TNL	140	GREEN	273	B2	TNL	140	BLUE	272	C2	TNL	80	BLUE	265	D2	TNL	80	BLUE	260	BR2	TNL	80	RED	1229																		
A3	TNL	140	GREEN	279	B3	TNL	140	BLUE	276	C3	TNL	80	BLUE	268	D3	TNL	80	BLUE	263	BR3	TNL	80	RED	1119																		
A4	TNL	140	GREEN	299	B4	TNL	140	BLUE	297	C4	TNL	80	BLUE	301	D4	TNL	80	BLUE	305	BR4	TNL	80	RED	778																		
A5	TNL	140	GREEN	287	B5	TNL	80	BLUE	282	C5	TNL	80	BLUE	286	D5	TNL	80	BLUE	294	BR5	TNL	80	RED	689																		
A6	TNL	140	GREEN	266	B6	TNL	80	BLUE	264	C6	TNL	80	BLUE	258	D6	TNL	80	BLUE	241	BR6	TNL	80	RED	667																		
A7	TNL	80	GREEN	337	B7	TNL	80	BLUE	245	C7	TNL	80	BLUE	237	D7	TNL	80	BLUE	250	BR7	TNL	80	RED	704																		
A8	TNL	80	GREEN	364	B8	TNL	80	BLUE	271	C8	TNL	80	BLUE	274	D8	TNL	80	BLUE	269	BR8	TNL	80	RED	632																		
A9	TNL	80	GREEN	1104	B9	TNL	80	BLUE	1015	C9	TNL	80	BLUE	790	D9	TNL	80	BLUE	539	BR9	TNL	80	RED	528																		
A10	TNL	80	GREEN	1031	B10	TNL	80	BLUE	950	C10	TNL	80	BLUE	709	D10	TNL	80	BLUE	606	BR10	TNL	80	RED	781																		
A11	TNL	80	GREEN	1054	B11	TNL	80	BLUE	970	C11	TNL	80	BLUE	730	D11	TNL	80	BLUE	789	BR11	TNL	80	RED	639																		
A12	TNL	80	GREEN	996	B12	TNL	80	BLUE	923	C12	TNL	80	BLUE	696	d12	TNL	80	blue	755																							
A13	TNL	80	GREEN	1011	B13	TNL	80	BLUE	946	C13	TNL	80	BLUE	756	D13	TNL	80	BLUE	806																							
A14	TNL	80	RED	377	B14	TNL	80	red	299	C14	TNL	80	RED	257																												
A15	TNL	80	RED	336	B15	TNL	80	red	284	C15	TNL	80	RED	257																												
2A1	TNL	220	GREEN	1244	2B1	TNL	220	BLUE	1233	2C1	TNL	140	BLUE	968	2D1	TNL	140	BLUE	816	2BR1	TNL	80	RED	2526																		
2A2	TNL	220	GREEN	1219	2B2	TNL	220	BLUE	1212	2C2	TNL	140	BLUE	948	2D2	TNL	140	BLUE	797	2BR2	TNL	80	RED	824																		
2A3	TNL	220	GREEN	1138	2B3	TNL	140	BLUE	1.114	2C3	TNL	140	BLUE	866	2D3	TNL	80	BLUE	831	2BR3	TNL	80	RED	814																		
2A4	TNL	140	GREEN	1059	2B4	TNL	140	BLUE	1138	2C4	TNL	140	BLUE	894	2D4	TNL	80	BLUE	778	2BR4	TNL	80	RED	886																		
2A5	TNL	140	GREEN	1059	2B5	TNL	140	BLUE	973	2C5	TNL	140	BLUE	737						2BR5	TNL	80	RED	439																		
2A6	TNL	140	GREEN	987	2B6	TNL	140	BLUE	913	2C6	TNL	140	BLUE	672																												
2A7	TNL	140	RED	668	2B7	TNL	140	RED	726	2C7	TNL	140	RED	830																												
																				3BR1	TNL	80	RED	1885																		
																				3BR11	TNL	80	RED	1747																		
3A1	TNL	400	GREEN	4199	3B1	TNL	400	BLUE	4129	3C1	TNL	280	BLUE	4430	3D1	TNL	220	blue	4697																							
3A2	TNL	280	GREEN	4270	3B2	TNL	280	BLUE	4228	3C2	TNL	220	BLUE	4511	3D2	TNL	140	blue	1021																							
3A3	TNL	220	GREEN	3486	3B3	TNL	220	BLUE	3598	3C3	TNL	140	BLUE	4107	3D3	TNL	140	blue	1523																							
													4D1	TNL	220	blue	3689																									
										STB-MAIN	TNL	140	RED	4190						brmain	TNL	280	red	2920																		
																																									knot point 1:	2640
																																									knot point 2:	2720

LINES TECHNICAL DATA

LINK 2

23

REF.	MAT.	kg	COLOR	mm	REF.	MAT.	kg	COLOR	mm	REF.	MAT.	kg	COLOR	mm	REF.	MAT.	kg	COLOR	mm	REF.	MAT.	kg	COLOR	mm	
A					B					C					D					BRAKE					
A1	TNL	140	GREEN	323	B1	TNL	140	BLUE	321	C1	TNL	80	BLUE	324	D1	TNL	80	BLUE	328	BR1	TNL	80	RED	1547	
A2	TNL	140	GREEN	286	B2	TNL	140	BLUE	285	C2	TNL	80	BLUE	277	D2	TNL	80	BLUE	272	BR2	TNL	80	RED	1284	
A3	TNL	140	GREEN	291	B3	TNL	140	BLUE	288	C3	TNL	80	BLUE	281	D3	TNL	80	BLUE	275	BR3	TNL	80	RED	1178	
A4	TNL	140	GREEN	313	B4	TNL	140	BLUE	311	C4	TNL	80	BLUE	315	D4	TNL	80	BLUE	319	BR4	TNL	80	RED	822	
A5	TNL	140	GREEN	300	B5	TNL	80	BLUE	295	C5	TNL	80	BLUE	299	D5	TNL	80	BLUE	308	BR5	TNL	80	RED	724	
A6	TNL	140	GREEN	279	B6	TNL	80	BLUE	277	C6	TNL	80	BLUE	270	D6	TNL	80	BLUE	252	BR6	TNL	80	RED	702	
A7	TNL	80	GREEN	352	B7	TNL	80	BLUE	256	C7	TNL	80	BLUE	248	D7	TNL	80	BLUE	261	BR7	TNL	80	RED	742	
A8	TNL	80	GREEN	381	B8	TNL	80	BLUE	284	C8	TNL	80	BLUE	286	D8	TNL	80	BLUE	282	BR8	TNL	80	RED	667	
A9	TNL	80	GREEN	1155	B9	TNL	80	BLUE	1062	C9	TNL	80	BLUE	827	D9	TNL	80	BLUE	563	BR9	TNL	80	RED	552	
A10	TNL	80	GREEN	1080	B10	TNL	80	BLUE	994	C10	TNL	80	BLUE	742	D10	TNL	80	BLUE	634	BR10	TNL	80	RED	636	
A11	TNL	80	GREEN	1103	B11	TNL	80	BLUE	1.015	C11	TNL	80	BLUE	764	D11	TNL	80	BLUE	826	BR11	TNL	80	RED	467	
A12	TNL	80	GREEN	1043	B12	TNL	80	BLUE	967	C12	TNL	80	BLUE	729	d12	TNL	80	blue	791						
A13	TNL	80	GREEN	1059	B13	TNL	80	BLUE	991	C13	TNL	80	BLUE	791	D13	TNL	80	BLUE	844						
A14	TNL	80	RED	395	B14	TNL	80	RED	313	C14	TNL	80	RED	269											
A15	TNL	80	RED	351	B15	TNL	80	RED	297	C15	TNL	80	RED	269											
2A1	TNL	220	GREEN	1301	2B1	TNL	220	BLUE	1289	2C1	TNL	140	BLUE	1012	2D1	TNL	140	BLUE	853	2BR1	TNL	80	RED	2778	
2A2	TNL	220	GREEN	1277	2B2	TNL	220	BLUE	1270	2C2	TNL	140	BLUE	994	2D2	TNL	140	BLUE	835	2BR2	TNL	80	RED	871	
2A3	TNL	220	GREEN	1190	2B3	TNL	140	BLUE	1.165	2C3	TNL	140	BLUE	905	2D3	TNL	80	BLUE	870	2BR3	TNL	80	RED	859	
2A4	TNL	140	GREEN	1109	2B4	TNL	140	BLUE	1192	2C4	TNL	140	BLUE	937	2D4	TNL	80	BLUE	815	2BR4	TNL	80	RED	783	
2A5	TNL	140	GREEN	1108	2B5	TNL	140	BLUE	1018	2C5	TNL	140	BLUE	772						2BR5	TNL	80	RED	496	
2A6	TNL	140	GREEN	1033	2B6	TNL	140	BLUE	956	2C6	TNL	140	BLUE	704											
2A7	TNL	140	RED	699	2B7	TNL	140	RED	760	2C7	TNL	140	RED	869											
																				3BR1	TNL	80	RED	2118	
																				3BR1I	TNL	80	RED	2112	
3A1	TNL	400	GREEN	4412	3B1	TNL	400	BLUE	4339	3C1	TNL	280	BLUE	4655	3D1	TNL	220	blue	4934						
3A2	TNL	280	GREEN	4492	3B2	TNL	280	BLUE	4447	3C2	TNL	220	BLUE	4744	3D2	TNL	140	blue	1067						
3A3	TNL	220	GREEN	3674	3B3	TNL	220	BLUE	3791	3C3	TNL	140	BLUE	4324	3D3	TNL	140	blue	1595						
															4D1	TNL	220	blue	3884						
										STB MAIN	TNL	140	RED	4412						BRMAIN	TNL	280	RED	2880	
																								KNOT POINT 1:	2599
																								KNOT POINT 2:	2680

LINES TECHNICAL DATA

LINK 2					25																			
REF.	MAT.	kg	COLOR	mm	REF.	MAT.	kg	COLOR	mm	REF.	MAT.	kg	COLOR	mm	REF.	MAT.	kg	COLOR	mm	REF.	MAT.	kg	COLOR	mm
A					B					C					D					BRAKE				
A1	TNL	140	GREEN	340	B1	TNL	140	BLUE	337	C1	TNL	80	BLUE	341	D1	TNL	80	BLUE	345	BR1	TNL	80	RED	1627
A2	TNL	140	GREEN	302	B2	TNL	140	BLUE	300	C2	TNL	80	BLUE	293	D2	TNL	80	BLUE	287	BR2	TNL	80	RED	1365
A3	TNL	140	GREEN	306	B3	TNL	140	BLUE	303	C3	TNL	80	BLUE	295	D3	TNL	80	BLUE	289	BR3	TNL	80	RED	1257
A4	TNL	140	GREEN	330	B4	TNL	140	BLUE	328	C4	TNL	80	BLUE	332	D4	TNL	80	BLUE	337	BR4	TNL	80	RED	857
A5	TNL	140	GREEN	316	B5	TNL	80	BLUE	311	C5	TNL	80	BLUE	314	D5	TNL	80	BLUE	324	BR5	TNL	80	RED	760
A6	TNL	140	GREEN	294	B6	TNL	80	BLUE	292	C6	TNL	80	BLUE	285	D6	TNL	80	BLUE	266	BR6	TNL	80	RED	735
A7	TNL	80	GREEN	371	B7	TNL	80	BLUE	269	C7	TNL	80	BLUE	261	D7	TNL	80	BLUE	275	BR7	TNL	80	RED	775
A8	TNL	80	GREEN	401	B8	TNL	80	BLUE	299	C8	TNL	80	BLUE	302	D8	TNL	80	BLUE	297	BR8	TNL	80	RED	696
A9	TNL	80	GREEN	1216	B9	TNL	80	BLUE	1118	C9	TNL	80	BLUE	870	D9	TNL	80	BLUE	593	BR9	TNL	80	RED	567
A10	TNL	80	GREEN	1137	B10	TNL	80	BLUE	1047	C10	TNL	80	BLUE	781	D10	TNL	80	BLUE	668	BR10	TNL	80	RED	862
A11	TNL	80	GREEN	1162	B11	TNL	80	BLUE	1.069	C11	TNL	80	BLUE	804	D11	TNL	80	BLUE	871	BR11	TNL	80	RED	684
A12	TNL	80	GREEN	1098	B12	TNL	80	BLUE	1.018	C12	TNL	80	BLUE	768	d12	TNL	80	blue	834					
A13	TNL	80	GREEN	1116	B13	TNL	80	BLUE	1.045	C13	TNL	80	BLUE	834	D13	TNL	80	BLUE	890					
A14	TNL	80	RED	415	B14	TNL	80	RED	330	C14	TNL	80	RED	283										
A15	TNL	80	RED	370	B15	TNL	80	RED	313	C15	TNL	80	RED	284										
2A1	TNL	220	GREEN	1369	2B1	TNL	220	BLUE	1356	2C1	TNL	140	BLUE	1065	2D1	TNL	140	BLUE	896	2BR1	TNL	80	RED	3075
2A2	TNL	220	GREEN	1346	2B2	TNL	220	BLUE	1338	2C2	TNL	140	BLUE	1048	2D2	TNL	140	BLUE	881	2BR2	TNL	80	RED	908
2A3	TNL	220	GREEN	1252	2B3	TNL	140	BLUE	1.225	2C3	TNL	140	BLUE	952	2D3	TNL	80	BLUE	915	2BR3	TNL	80	RED	897
2A4	TNL	140	GREEN	1168	2B4	TNL	140	BLUE	1256	2C4	TNL	140	BLUE	987	2D4	TNL	80	BLUE	859	2BR4	TNL	80	RED	975
2A5	TNL	140	GREEN	1167	2B5	TNL	140	BLUE	1072	2C5	TNL	140	BLUE	812						2BR5	TNL	80	RED	447
2A6	TNL	140	GREEN	1088	2B6	TNL	140	BLUE	1007	2C6	TNL	140	BLUE	742										
2A7	TNL	140	RED	737	2B7	TNL	140	RED	800	2C7	TNL	140	RED	915										
																				3BRI	TNL	80	RED	2414
																				3BRII	TNL	80	RED	2245
3A1	TNL	400	GREEN	4666	3B1	TNL	400	BLUE	4590	3C1	TNL	280	BLUE	4922	3D1	TNL	220	blue	5216					
3A2	TNL	280	GREEN	4756	3B2	TNL	280	BLUE	4709	3C2	TNL	220	BLUE	5021	3D2	TNL	140	blue	1121					
3A3	TNL	220	GREEN	3898	3B3	TNL	220	BLUE	4022	3C3	TNL	140	BLUE	4583	3D3	TNL	140	blue	1681					
															4D1	TNL	220	blue	4118					
										STB MAIN	TNL	140	RED							BRMAIN	TNL	280	RED	2920
																							KNOT POINT 1	2640
																							KNOT POINT 2	2720

LINES TECHNICAL DATA

LINK 2

27

REF.	MAT.	kg	COLOR	mm	REF.	MAT.	kg	COLOR	mm	REF.	MAT.	kg	COLOR	mm	REF.	MAT.	kg	COLOR	mm	REF.	MAT.	kg	COLOR	mm																					
A					B					C					D					BRAKE																									
A1	TNL	140	GREEN	353	B1	TNL	140	BLUE	350	C1	TNL	80	BLUE	354	D1	TNL	80	BLUE	358	BR1	TNL	80	RED	1689																					
A2	TNL	140	GREEN	314	B2	TNL	140	BLUE	312	C2	TNL	80	BLUE	304	D2	TNL	80	BLUE	299	BR2	TNL	80	RED	1421																					
A3	TNL	140	GREEN	318	B3	TNL	140	BLUE	314	C3	TNL	80	BLUE	306	D3	TNL	80	BLUE	300	BR3	TNL	80	RED	1314																					
A4	TNL	140	GREEN	343	B4	TNL	140	BLUE	341	C4	TNL	80	BLUE	345	D4	TNL	80	BLUE	350	BR4	TNL	80	RED	890																					
A5	TNL	140	GREEN	328	B5	TNL	80	BLUE	322	C5	TNL	80	BLUE	326	D5	TNL	80	BLUE	337	BR5	TNL	80	RED	789																					
A6	TNL	140	GREEN	306	B6	TNL	80	BLUE	303	C6	TNL	80	BLUE	296	D6	TNL	80	BLUE	276	BR6	TNL	80	RED	763																					
A7	TNL	80	GREEN	385	B7	TNL	80	BLUE	279	C7	TNL	80	BLUE	270	D7	TNL	80	BLUE	285	BR7	TNL	80	RED	805																					
A8	TNL	80	GREEN	417	B8	TNL	80	BLUE	311	C8	TNL	80	BLUE	313	D8	TNL	80	BLUE	309	BR8	TNL	80	RED	723																					
A9	TNL	80	GREEN	1262	B9	TNL	80	BLUE	1161	C9	TNL	80	BLUE	904	D9	TNL	80	BLUE	615	BR9	TNL	80	RED	584																					
A10	TNL	80	GREEN	1181	B10	TNL	80	BLUE	1088	C10	TNL	80	BLUE	811	D10	TNL	80	BLUE	693	BR10	TNL	80	RED	895																					
A11	TNL	80	GREEN	1207	B11	TNL	80	BLUE	1.110	C11	TNL	80	BLUE	835	D11	TNL	80	BLUE	905	BR11	TNL	80	RED	704																					
A12	TNL	80	GREEN	1141	B12	TNL	80	BLUE	1.058	C12	TNL	80	BLUE	798	d12	TNL	80	blue	866																										
A13	TNL	80	GREEN	1160	B13	TNL	80	BLUE	1.086	C13	TNL	80	BLUE	867	D13	TNL	80	BLUE	926																										
A14	TNL	80	RED	431	B14	TNL	80	RED	343	C14	TNL	80	RED	294																															
A15	TNL	80	RED	384	B15	TNL	80	RED	325	C15	TNL	80	RED	294																															
2A1	TNL	220	GREEN	1421	2B1	TNL	220	BLUE	1408	2C1	TNL	140	BLUE	1105	2D1	TNL	140	BLUE	930	2BR1	TNL	80	RED	3304																					
2A2	TNL	220	GREEN	1399	2B2	TNL	220	BLUE	1391	2C2	TNL	140	BLUE	1089	2D2	TNL	140	BLUE	915	2BR2	TNL	80	RED	942																					
2A3	TNL	220	GREEN	1299	2B3	TNL	140	BLUE	1.272	2C3	TNL	140	BLUE	988	2D3	TNL	80	BLUE	950	2BR3	TNL	80	RED	932																					
2A4	TNL	140	GREEN	1214	2B4	TNL	140	BLUE	1305	2C4	TNL	140	BLUE	1.026	2D4	TNL	80	BLUE	892	2BR4	TNL	80	RED	1011																					
2A5	TNL	140	GREEN	1212	2B5	TNL	140	BLUE	1113	2C5	TNL	140	BLUE	843						2BR5	TNL	80	RED	451																					
2A6	TNL	140	GREEN	1131	2B6	TNL	140	BLUE	1046	2C6	TNL	140	BLUE	771																															
2A7	TNL	140	RED	765	2B7	TNL	140	RED	831	2C7	TNL	140	RED	950																															
																				3BRI	TNL	80	RED	2634																					
																				3BRII	TNL	80	RED	2453																					
3A1	TNL	400	GREEN	4861	3B1	TNL	400	BLUE	4781	3C1	TNL	280	BLUE	5126	3D1	TNL	220	blue	5432																										
3A2	TNL	280	GREEN	4957	3B2	TNL	280	BLUE	4909	3C2	TNL	220	BLUE	5233	3D2	TNL	140	blue	1163																										
3A3	TNL	220	GREEN	4069	3B3	TNL	220	BLUE	4199	3C3	TNL	140	BLUE	4782	3D3	TNL	140	blue	1747																										
															4D1	TNL	220	blue	4296																										
										STB MAIN	TNL	140	RED	4879						BRMAIN	TNL	280	RED	2920																					
																																											KNOT POINT 1	2640	
																																												KNOT POINT 2	2720

NIVIUK LINK 2 21

LINES HEIGHT + RISER mm

	A	B	C	D	br
1	5737	5654	5693	5811	6633
2	5701	5619	5648	5758	6385
3	5682	5602	5631	5742	6275
4	5702	5623	5664	5784	6117
5	5680	5609	5648	5820	6028
6	5659	5591	5620	5767	5996
7	5651	5596	5627	5723	6033
8	5678	5622	5664	5742	5895
9	5634	5571	5619	5736	5791
10	5561	5506	5538	5803	5597
11	5512	5466	5494	5553	5455
12	5454	5419	5460	5519	
13	5469	5442	5520	5570	
14	5220	5200	5262		
15	5179	5185	5262		

RISERS LENGHT mm

	A	B	C	D	
	480	480	480	480	STANDARD
	480	522	565	650	TRIMMER OPENED
	395	440	485	650	ACCELERATED

NIVIUK LINK 2 23

LINES HEIGHT + RISER mm

	A	B	C	D	br
1	6021	5934	5976	6100	6914
2	5984	5898	5929	6044	6651
3	5965	5882	5915	6029	6545
4	5987	5905	5949	6073	6400
5	5967	5892	5933	6114	6302
6	5946	5874	5904	6058	6268
7	5938	5880	5914	6012	6308
8	5967	5908	5952	6033	6151
9	5922	5856	5908	6027	6036
10	5847	5788	5823	6098	5833
11	5795	5747	5777	5839	5664
12	5735	5699	5742	5804	
13	5751	5723	5804	5857	
14	5491	5470	5535		
15	5447	5454	5535		

RISERS LENGHT mm

	A	B	C	D	
	480	480	480	480	STANDARD
	480	522	565	650	TRIMMER OPENED
	395	440	485	650	ACCELERATED

NIVIUK LINK 2 25

LINES HEIGHT + RISER mm

	A	B	C	D	br
1	6360	6268	6313	6442	7332
2	6322	6231	6265	6384	7070
3	6303	6216	6250	6371	6962
4	6327	6241	6287	6419	6809
5	6309	6230	6272	6463	6712
6	6287	6211	6243	6405	6676
7	6280	6219	6254	6358	6716
8	6310	6249	6295	6380	6546
9	6266	6197	6250	6377	6417
10	6187	6126	6161	6452	6184
11	6133	6083	6114	6181	6006
12	6069	6032	6078	6144	
13	6087	6059	6144	6200	
14	5814	5792	5860		
15	5769	5775	5861		

RISERS LENGHT mm

	A	B	C	D	
	480	480	480	480	STANDARD
	480	522	565	650	TRIMMER OPENED
	395	440	485	650	ACCELERATED

NIVIUK LINK 2 27

LINES HEIGHT + RISER mm

	A	B	C	D	br
1	6620	6524	6570	6705	7623
2	6581	6486	6520	6646	7355
3	6563	6471	6506	6632	7248
4	6588	6498	6545	6682	7096
5	6569	6488	6532	6731	6995
6	6547	6469	6502	6670	6959
7	6541	6478	6514	6621	7001
8	6573	6510	6557	6645	6817
9	6528	6458	6514	6643	6678
10	6447	6385	6421	6721	6429
11	6392	6340	6373	6443	6238
12	6326	6288	6336	6404	
13	6345	6316	6405	6464	
14	6060	6038	6108		
15	6013	6020	6108		

RISERS LENGHT mm

	A	B	C	D	
	480	480	480	480	STANDARD
	480	522	565	650	TRIMMER OPENED
	395	440	485	650	ACCELERATED

SUSPENSION TECHNICAL DATA

LINK 2

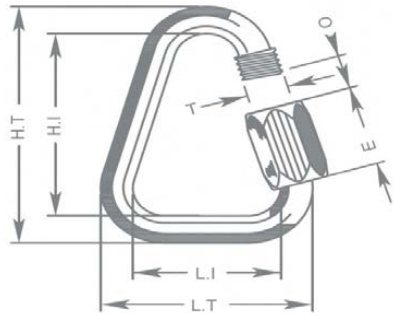
MATERIAL CODE		TNL	TNL	TNL	TNL
STRENGTH CODE		080	140	220	280
DIAMETER mm	Ø	1,1	1,4	1,6	1,8
CORE MATERIAL		TECHNORA	TECHNORA	TECHNORA	TECHNORA
SLEEVE MATERIAL		POLYESTER	POLYESTER	POLYESTER	POLYESTER
WEIGHT G/M	TOTAL	1,1	1,2	1,6	2,7
BREAKING STRENGTH	MÍNIMA	80	140	220	280
	MÁXIMA	92	160	250	320
STRENGTH AFTER					
5.000 BENDING	TEST EN	36,7	76,1	114,2	134,7
CYCLES					
ELONGATION AT	5 DAN EN %	0,3	0,2	0,2	0,2
	10 DAN EN %	0,5	0,3	0,3	0,3
	15 DAN EN %	0,7	0,5	0,5	0,4
	20 DAN EN %	1	0,6	0,6	0,4
	25 DAN EN %	1,3	0,8	0,7	0,5
	30 DAN EN %	2,3	1,5	1,2	0,9
	75 DAN EN %	2,8	2,3	1,8	1,3
	100 DAN EN %		2,7	2,2	1,7
	125 DAN EN %		3,2	2,7	2
	150 DAN EN %			3	2,3
	175 DAN EN %			3,3	2,7
	200 DAN EN %			3,8	2,8
	250 DAN EN %				
		3	3,4	4	4,1

MAILLON TECHNICAL DATA

DESCRIPTION

MAILLON	DELTA
CODE	MRI4
MATERIAL	STAINLESS STEEL
SIZE	4,3 m/m
WEIGHT	12 G/PIECE
QUANTITY	10 PIECES
INSERTS	2 GREEN / 8 BLACK

TECHNICAL SPECIFICATIONS



DIMENSIONS	m/m
L.T.	28
L.I.	20
H.T.	38
H.I.	30
O	4
E	11
T	4
LOAD	KG
WORKING LIMIT	150
BREAKING	750

MATERIAL

AISI 304 STAINLESS STEEL STANDARD

CLOSING APPLIED BY MANUAL & ENTIRE SCREWING OF THE NUT
 TO GUARANTEE THE HIGHEST SAFETY (NO THREAD SHOULD BE OBVIOUS)

SYSTEMATIC CONTROL OF MAILLON QUICK-LINKS BEFORE EVERY FLIGHT

THREAD TECHNICAL DATA**SAIL MAKING**

NAME	SERAFIL
N° OF REFERENCE	60
MATERIAL	POLYESTER
TYPE OF FINISH	SILK
LINEAR DENSITY	NM 61 / 3 (DTEX 163 * 3)
BREAKING STRENGTH	3,000 CN
ELONGATION	17,00%

SERAFIL PROPERTIES

SOLIDITY ARTIFICIAL LIGTH	ISO 105 B02 > 5 - 6
SOLIDITY SWEAT	ISO 105 E04 > 4
SOLIDITY WASHING	ISO 105 C04 > 3
SOLIDITY GRAZE IN DRY	ISO 105 X12 > 4
SOLIDITY WASHING IN DRY	ISO 105 D01 > 3 - 4

TREATMENT WATER REPELLENT	WR
---------------------------	----

RISERS MAKING

NAME	COATS BONDED C.F.P.
N° OF REFERENCE	V138
MATERIAL	POLYESTER
TYPE OF FINISH	SILK
BREAKING STRENGTH	9,5 KG
ELONGATION	19%

RISERS TECHNICAL DATA**RISERS**

N° OF REFERENCE	G-R 22
MATERIAL	POLYESTER
WIDTH	22 M/M
THICKNESS	1,52 M/M
BREAKING STRENGTH	1100 DAN
ELONGATION	MAX. 15%
WEIGHT	25 G/M
COLOR	BLACK

COLOR INDICATOR

N° OF REFERENCE	IC-G 1-2
MATERIAL	POLYESTER
WIDTH	70 M/M
THICKNESS	0,80 M/M
BREAKING STRENGTH	130 DN
ELONGATION	35 %
WEIGHT	32 G * L.M.
COLOR	GREEN

LOOPS

N° OF REFERENCE	LKI - 10
MATERIAL	NYLON
WIDTH	10 M/M
BREAKING STRENGTH	84 KG
ELONGATION	30 %
WEIGHT	5,5 G/M
COLOR	WHITE

